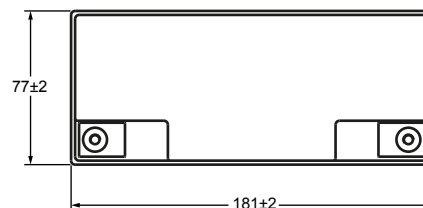
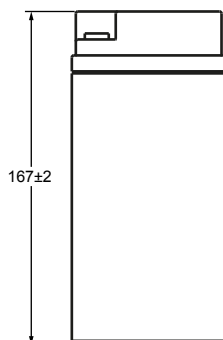
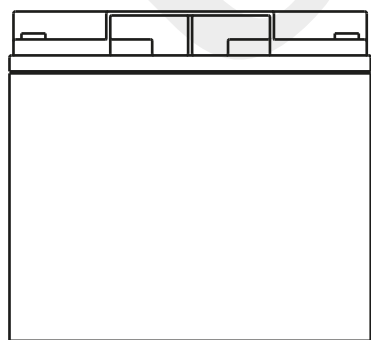


## Technical Dimensions (mm)

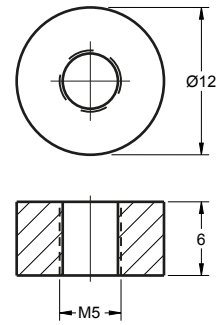


Image



Terminal Dimensions (mm)

Standard Terminal: F12



Technical Specification

<b>Electrical Characteristics</b>	Nominal Voltage	12.8V
	Nominal Capacity	20Ah
	Minimum Capacity	19.1Ah
	Energy	256Wh
<b>Standard Charge</b>	Charge Voltage	14.6V
	Standard Charge	0.2C CC charge to 3.65V/cell, then CV 3.65V/cell charge 3.5h
	Rapid Charge	1C CC charge to 3.65V/cell, then CV 3.65V/cell charge 3h
	Max. Charge Current	1C (A)
<b>Standard Discharge</b>	Continuous Discharge Current	2CA
	Discharge Cut-off Voltage	8.4V
<b>Environmental Information</b>	Charge Temperature	0 ~ 45°C
	Discharge Temperature	-20 ~ 60°C
	Storage Temperature	-20 ~ 45°C
<b>Mechanical Information</b>	Container Material	ABS
	Flame Retardant Option (FR)	ABS (UL94:VO)
	Standard Terminal	F12
<b>Design Life</b>	15 Years	
<b>Battery Management System</b>	Complete with BMS unit measuring current, voltage, single cell surface temperature and the ambient temperature of the battery.	

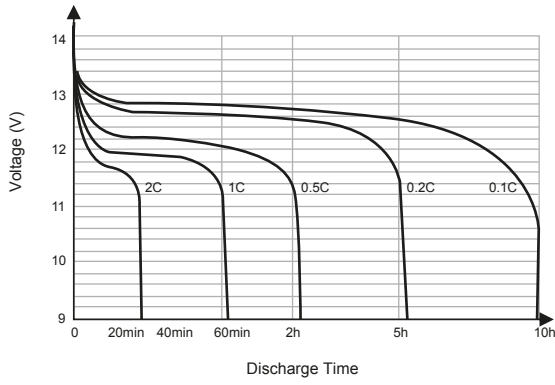
Self Discharge

Ultracell® LIT batteries may be stored for up to 2 years at 25°C and then a refresh charge is required. For higher temperatures the time intervals will be shorter.

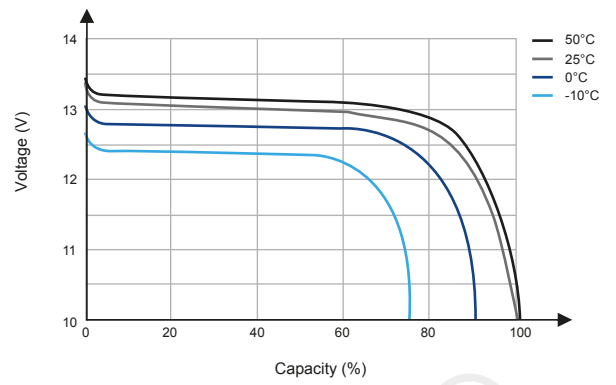




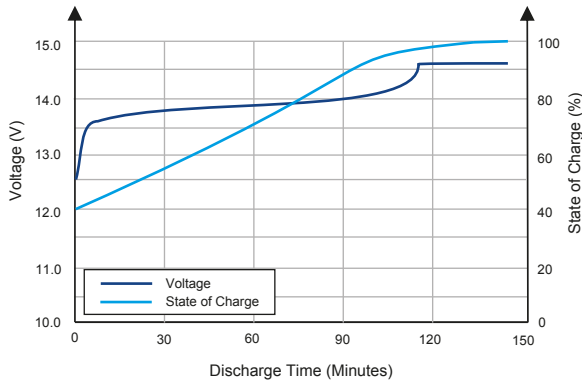
Different Rate Discharge Curve (25°C)



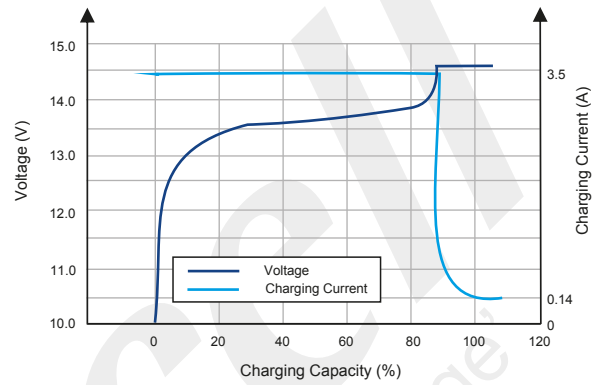
Different Temperature Discharge Curve (0.5C)



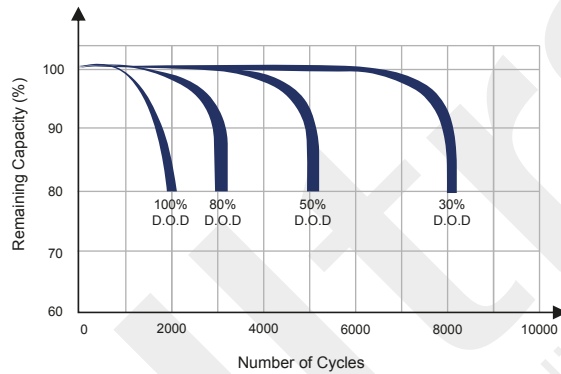
State of Charge Curve (0.5C, 25°C)



Charging Characteristics (0.5C, 25°C)



Cycle Life on D.O.D (25°C)



Temperature on Self Discharge Curve

