

NEATA

GEL battery series

Datasheet : NTG12-9(12V9AH)

Nominal Voltage	12V
Number of cell	6
Design Life	20 years
Nominal Capacity 77°F(25°C)	
20 hour rate (0.45A, 10.5V)	9.00Ah
10 hour rate (0.82A, 10.5V)	8.20Ah
5 hour rate (1.54A, 10.5V)	7.70Ah
1 hour rate (5.80A, 9.6V)	5.80Ah
Internal Resistance	
Fully Charged battery 77°F(25°C)	≤18mOhms
Self-Discharge	
3% of capacity declined per month at 20°C(average)	
Operating Temperature Range	
Discharge	-20~60°C
Charge	-10~60°C
Storage	-20~60°C
Max. Discharge Current 77°F(25°C)	200A(5s)
Short Circuit Current	450A
Charge Methods: Constant Voltage Charge 77°F(25°C)	
Cycle use	2.40-2.45VPC
Maximum charging current	3.60A
Temperature compensation	-30mV/°C
Standby use	2.23-2.30VPC
Temperature compensation	-20mV/°C



Wide Range Temperature



Warranty



Maintenance Free



GEL Technology



easy use

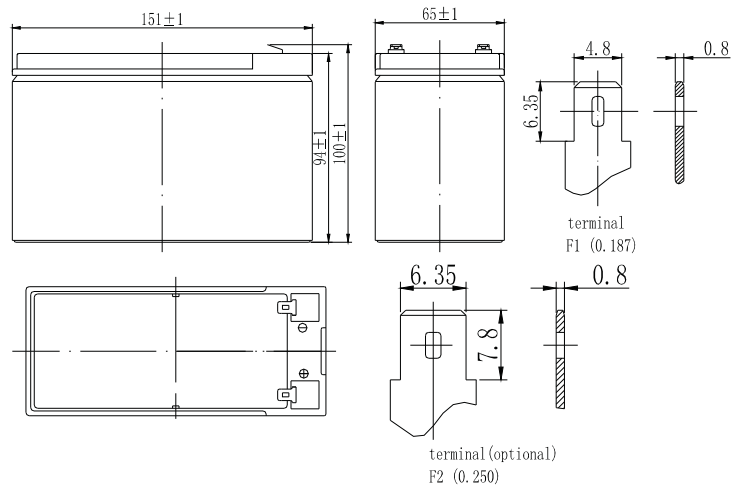


long life

Mechanical Characteristics

Length(mm / inch)	151 / 5.94
Width(mm / inch)	65 / 2.56
Height(mm / inch)	94 / 3.70
Total Height(mm / inch)	99 / 3.90
Approx. Weight(Kg / lbs)	2.60 / 5.72

* Weight deviation: ± 3%



Technical Characteristics

Discharge Constant Current (Amperes at 77°F25°C)

End Point	Volts/Cell	2min	5min	10min	15min	30min	1h	5h	10h	20h
1.60V	70.0	41.0	24.2	18.0	9.90	5.80	1.60	0.87	0.47	
1.65V	63.0	39.0	23.6	17.5	9.79	5.75	1.56	0.86	0.46	
1.70V	59.8	38.7	22.9	16.1	9.36	5.71	1.55	0.84	0.46	
1.75V	54.8	36.4	22.1	14.6	8.91	5.66	1.54	0.82	0.45	
1.80V	48.7	33.2	21.0	13.9	8.45	5.51	1.53	0.82	0.44	

Discharge Constant Power (Watts at 77°F25°C)

End Point	Volts/Cell	2min	5min	10min	15min	30min	1h	2h	3h	5h
1.60V	118.3	76.6	49.3	37.3	22.1	12.8	6.30	4.34	3.10	
1.65V	112.1	73.6	48.3	36.8	21.9	12.7	6.23	4.29	3.04	
1.70V	108.3	72.5	48.0	36.6	21.8	12.6	6.08	4.20	2.98	
1.75V	100.8	69.0	46.6	35.8	21.6	12.5	5.94	4.08	2.92	
1.80V	92.5	64.5	44.3	34.5	21.2	12.4	5.77	3.92	2.85	

(Note)The above characteristics data are average values obtained within three charge/discharge cycles. All data shall be changed without notice, Neata reserves the right to explain and update the information.

SHENZHEN OFFICE (CHINA)
 Tel: +86-755-2691-9474
 Fax: +86-755-2691-9474

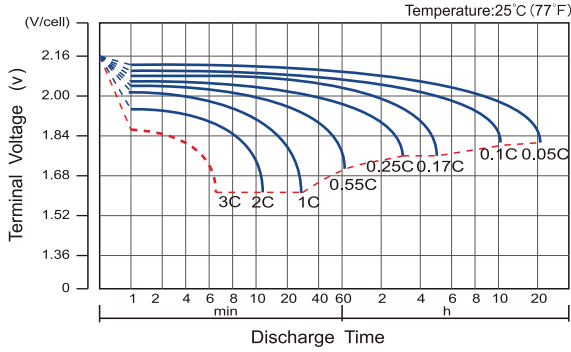
Recognized under CE/IEC and certified by ISO9001,14001



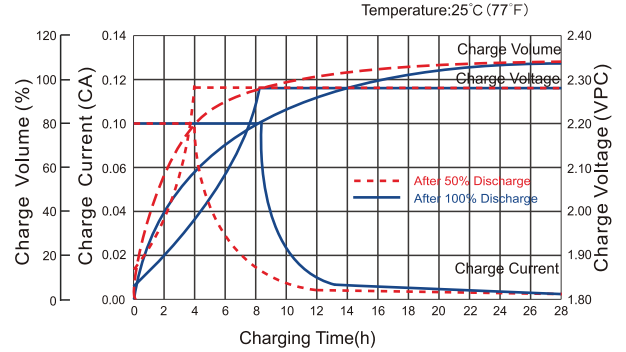
NEATA GEL battery series

Datasheet : NTG12-9(12V9AH)

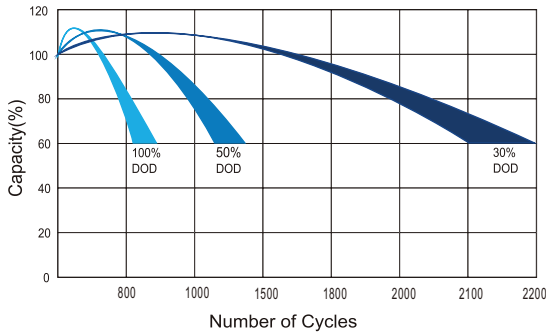
Discharge Characteristics Curve



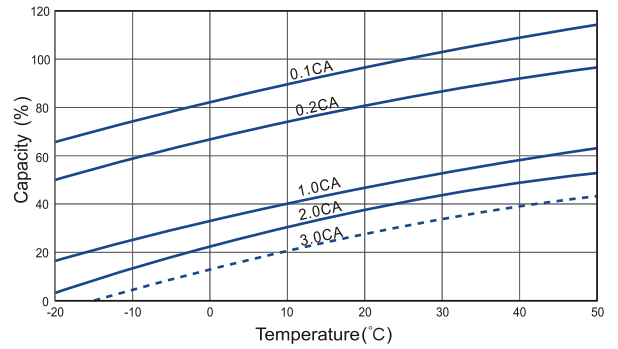
Charge Characteristic Curve For Standby Use



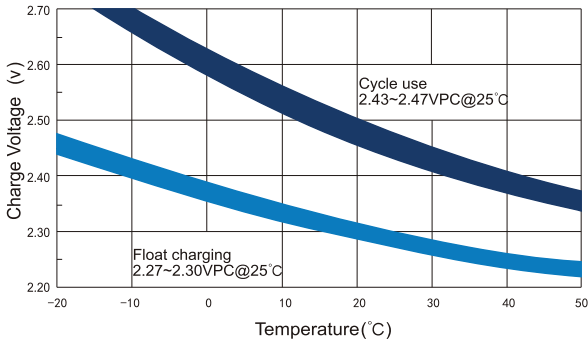
Cycle Life In Relation To Depth Of Discharge



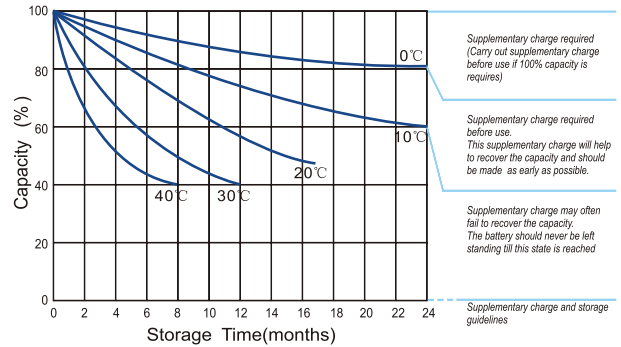
Temperature Effects On Capacity



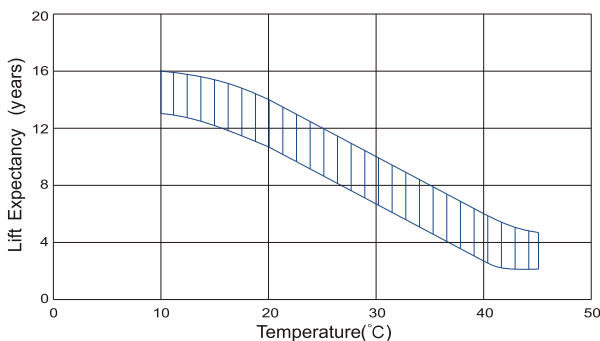
Relationship Between Charging Voltage And Temperature



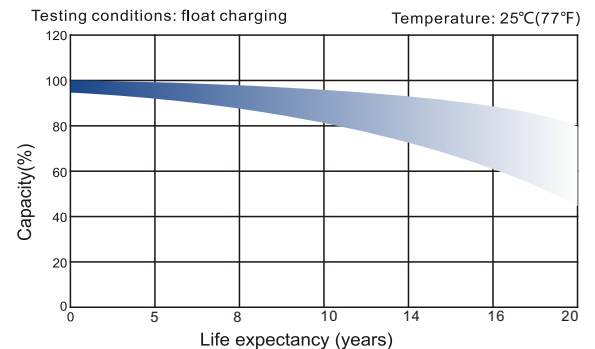
Storage Characteristics



Effect Of Temperature On Long Term Life



Life Characteristics Of Standby Use



SHENZHEN OFFICE (CHINA)
 Tel: +86-755-2691-9474
 Fax: +86-755-2691-9474

Recognized under CE/IEC and certified by ISO9001,14001

