

NEATA

GEL battery series

Datasheet : NTG12-100(12V100AH)

Nominal Voltage	12V
Number of cell	6
Design Life	20 years
Nominal Capacity 77°F(25°C)	
20 hour rate (5.0A, 10.5V)	100Ah
10 hour rate (9.50A, 10.5V)	95.0Ah
5 hour rate (217.5A, 10.5V)	87.5Ah
1 hour rate (66.2A, 9.6V)	66.2Ah
Internal Resistance	
Fully Charged battery 77°F(25°C)	≤5.7mOhms
Self-Discharge	
3% of capacity declined per month at 20°C(average)	
Operating Temperature Range	
Discharge	-20~60°C
Charge	-10~60°C
Storage	-20~60°C
Max. Discharge Current 77°F(25°C)	900(5s)
Short Circuit Current	2100A
Charge Methods: Constant Voltage Charge 77°F(25°C)	
Cycle use	2.40-2.45VPC
Maximum charging current	30.2A
Temperature compensation	-30mV/°C
Standby use	13.6-13.8V
Temperature compensation	-20mV/°C





Wide Range Temperature



Warranty



Maintenance Free



GEL Technology



easy use

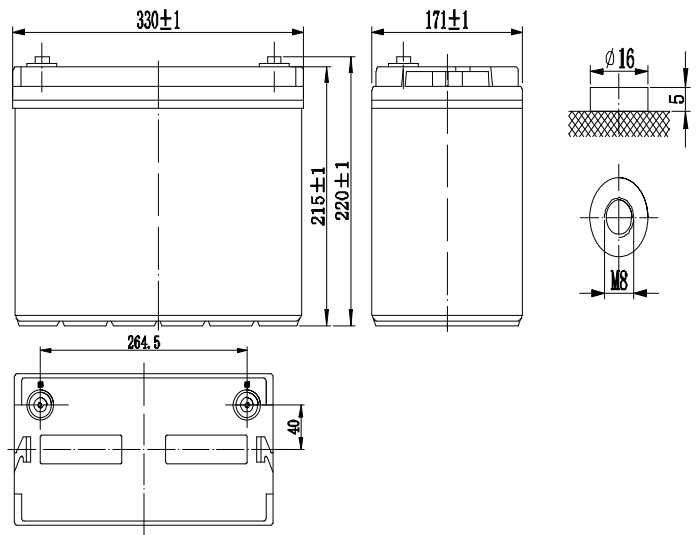


long life

Mechanical Characteristics

Length(mm / inch)	330 / 13.10
Width(mm / inch)	171 / 6.80
Height(mm / inch)	215 / 8.53
Total Height(mm / inch)	220 / 8.73
Approx. Weight(Kg / lbs)	27.0/ 59.4

* Weight deviation: ± 3%



Technical Characteristics

Discharge Constant Current (Amperes at 77°F25°C)

End Point										
Volts/Cell	10min	15min	30min	1h	3h	5h	10h	20h		
1.60V	220	180	105	65.2	27.6	18.9	9.75	5.20		
1.65V	212	173	101	61.6	27.4	18.2	9.70	5.15		
1.70V	192	159	93.6	60.6	26.9	17.9	9.65	5.10		
1.75V	180	148	90.7	59.6	26.6	17.4	9.60	5.05		
1.80V	168	139	88.7	56.5	25.1	17.1	9.50	5.00		

Discharge Constant Power (Watts at 77°F25°C)

End Point									
Volts/Cell	10min	15min	30min	45min	1h	2h	3h	5h	
1.60V	376	311	194	147	122	69.7	52.3	35.6	
1.65V	364	306	183	143	116	66.9	50.7	35.2	
1.70V	346	290	178	134	112	65.9	50.4	34.8	
1.75V	339	285	173	131	109	63.7	48.6	34.2	
1.80V	316	271	167	128	102	61.7	48.0	33.8	

(Note)The above characteristics data are average values obtained within three charge/discharge cycles. All data shall be changed without notice, Neata reserves the right to explain and update the information.

SHENZHEN OFFICE (CHINA)
 Tel: +86-755-2691-9474
 Fax: +86-755-2691-9474

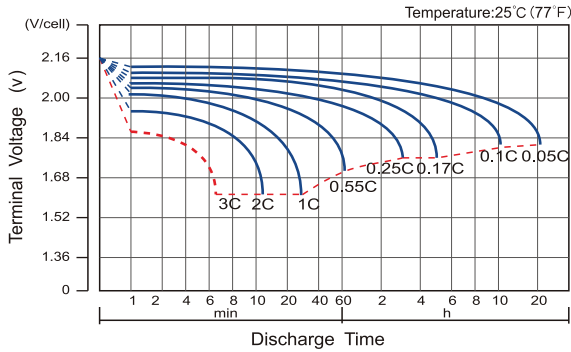
Recognized under CE/ IEC and certified by ISO9001 ,14001



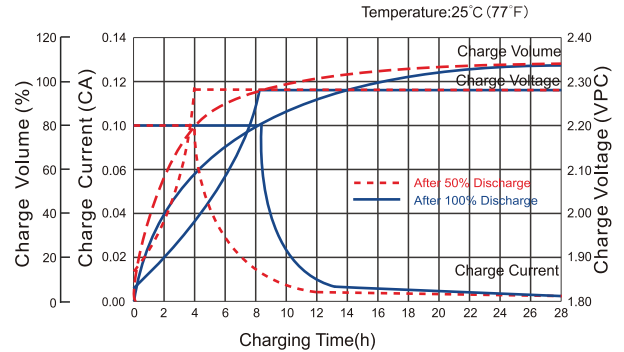
NEATA GEL battery series

Datasheet : NTG12-100(12V100AH)

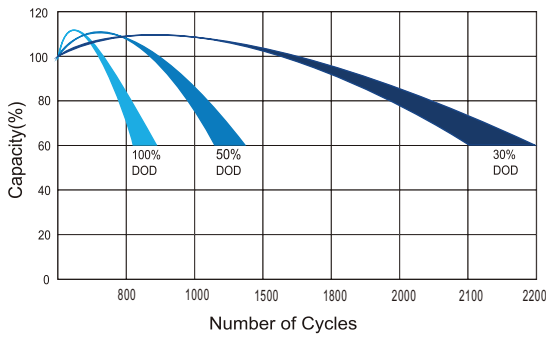
Discharge Characteristics Curve



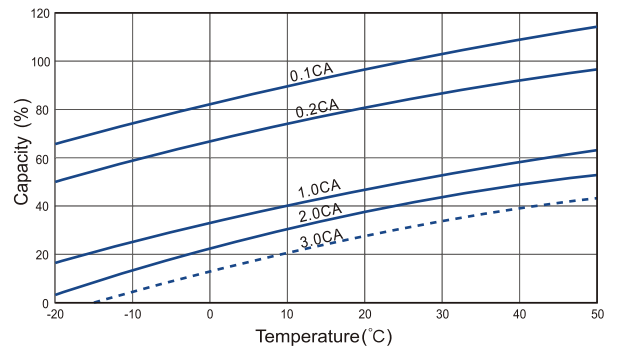
Charge Characteristic Curve For Standby Use



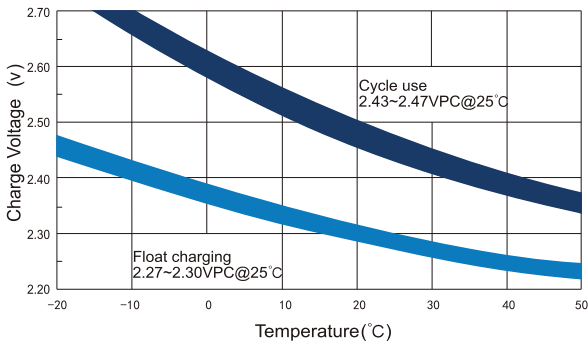
Cycle Life In Relation To Depth Of Discharge



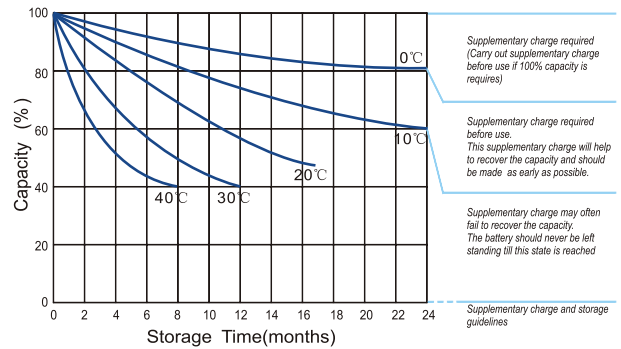
Temperature Effects On Capacity



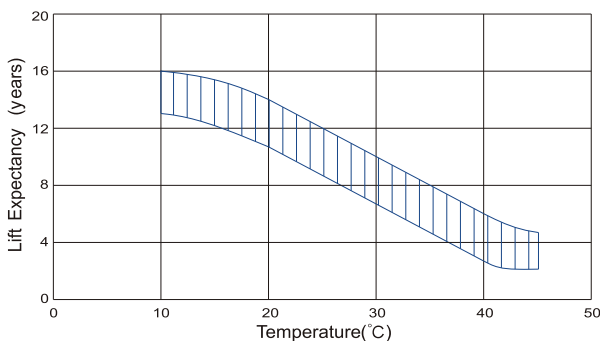
Relationship Between Charging Voltage And Temperature



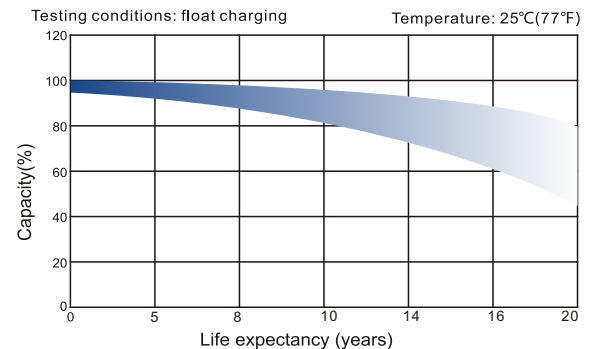
Storage Characteristics



Effect Of Temperature On Long Term Life



Life Characteristics Of Standby Use



SHENZHEN OFFICE (CHINA)
 Tel: +86-755-2691-9474
 Fax: +86-755-2691-9474

Recognized under CE/IEC and certified by ISO9001,14001

