

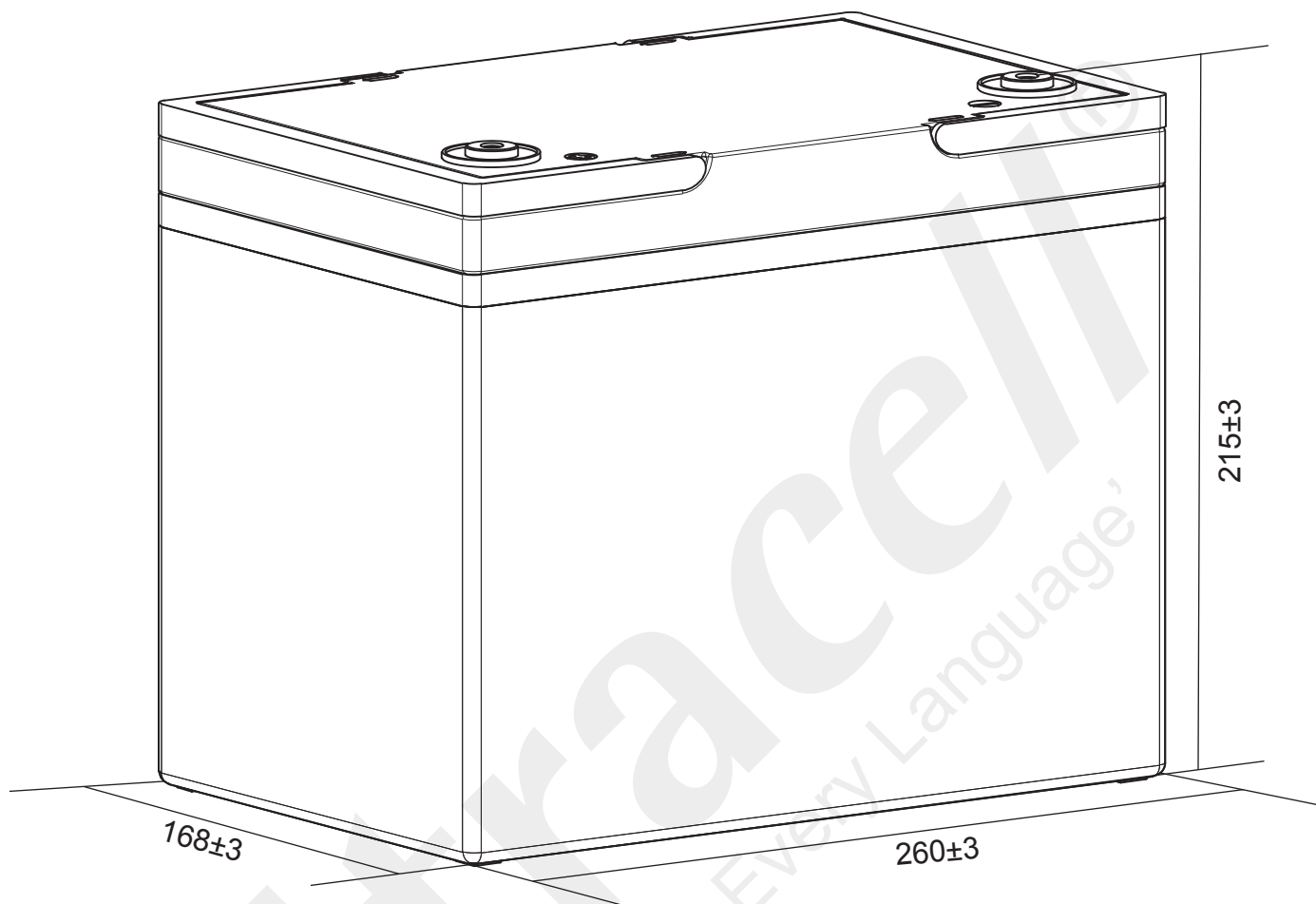
# Ultracell®

'Quality in Every Language'

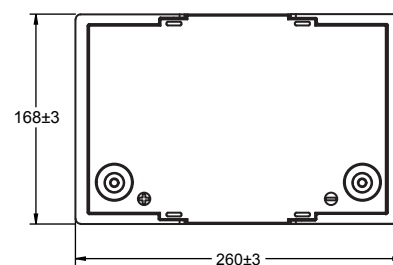
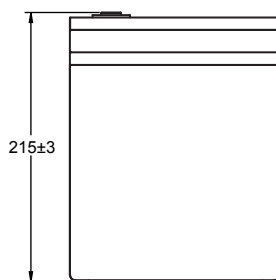
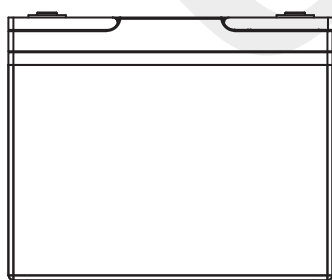
LIT50-24

24V 50Ah/1280Wh

Lithium Series



## Technical Dimensions (mm)



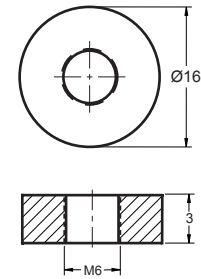


Image



Terminal Dimensions (mm)

Standard Terminal: F6



Technical Specification

<b>Output</b>	Nominal Voltage	25.6V
	Nominal Capacity	50Ah @ 0.2C
	Energy	1200Wh
<b>Terminal Type</b>	Standard Terminal	F6
<b>Container Material</b>	Standard Option	ABS
	Flame Retardant Option (FR)	ABS (UL94:VO)
	IP Class	IP65
<b>Standard Charge</b>	Charge Voltage	29.2V/set
	Standard charge	0.2C (CC) to 3.65V/cell, then 3.65V/cell (CV) 3.5h
	Rapid charge	1C (CC) to 3.65V/cell, then 3.65V/cell (CV) 3h
	Max. Charge Current	50A
<b>Standard Discharge</b>	Continuous Discharge Current	50A
	Discharge Cut-off Voltage	20V/set
<b>Discharge Characteristics</b>	Operating Temp Range	Charge: 0 ~ 45°C
		Discharge: -20 ~ 60°C
		Storage: -20 ~ 45°C
<b>Efficiency of Charge</b>	100% @0.5C	
<b>Efficiency of Discharge</b>	96~99% @0.5C	
<b>Cycle Life</b>	≥2000 cycles @ 1C 100%DOD	
<b>Battery Management System</b>	Complete with BMS unit measuring current, voltage, single cell surface temperature and the ambient temperature of the battery.	

Self Discharge

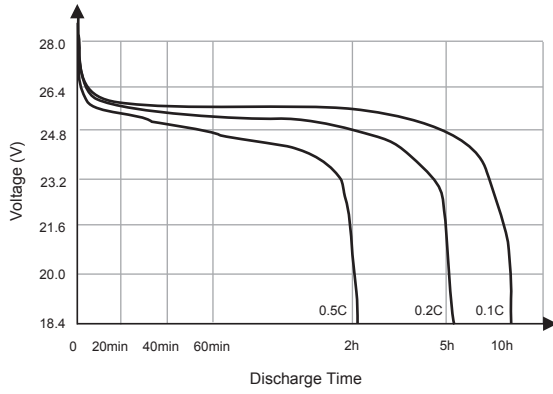
Ultracell® LIT batteries may be stored for up to 2 years at 25°C and then a refresh charge is required. For higher temperatures the time intervals will be shorter.

Transportation

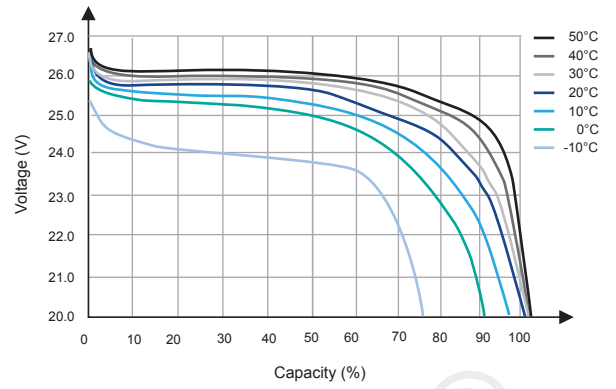
Ultracell® LIT Batteries will be at 30% State of Charge when shipped in accordance to the applicable international and national government regulations. To prevent damage during transit, ensure packaging is safe and secure. Keep battery dry and away from direct sunlight. Suitable for all transportation vehicles.



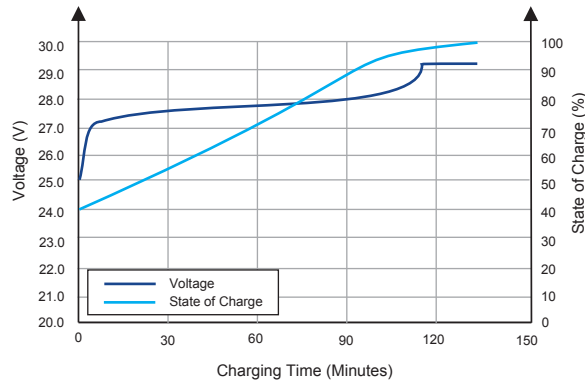
Different Rate Discharge Curve (25°C)



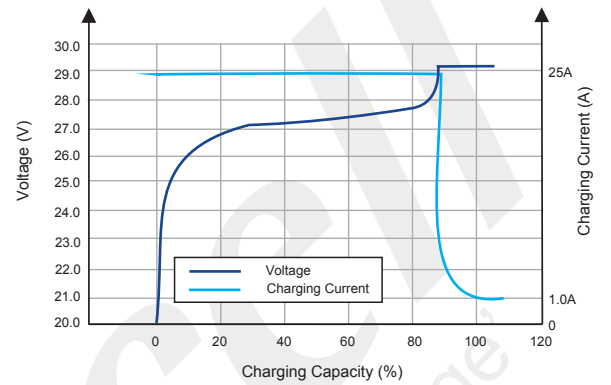
Different Temperature Discharge Curve (0.5C)



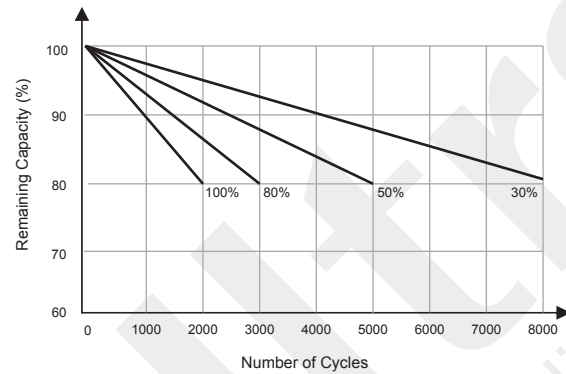
State of Charge Curve (0.5C, 25°C)



Charging Characteristics (0.5C, 25°C)



Cycle Life on D.O.D (25°C)



Temperature on Self Discharge Curve

