

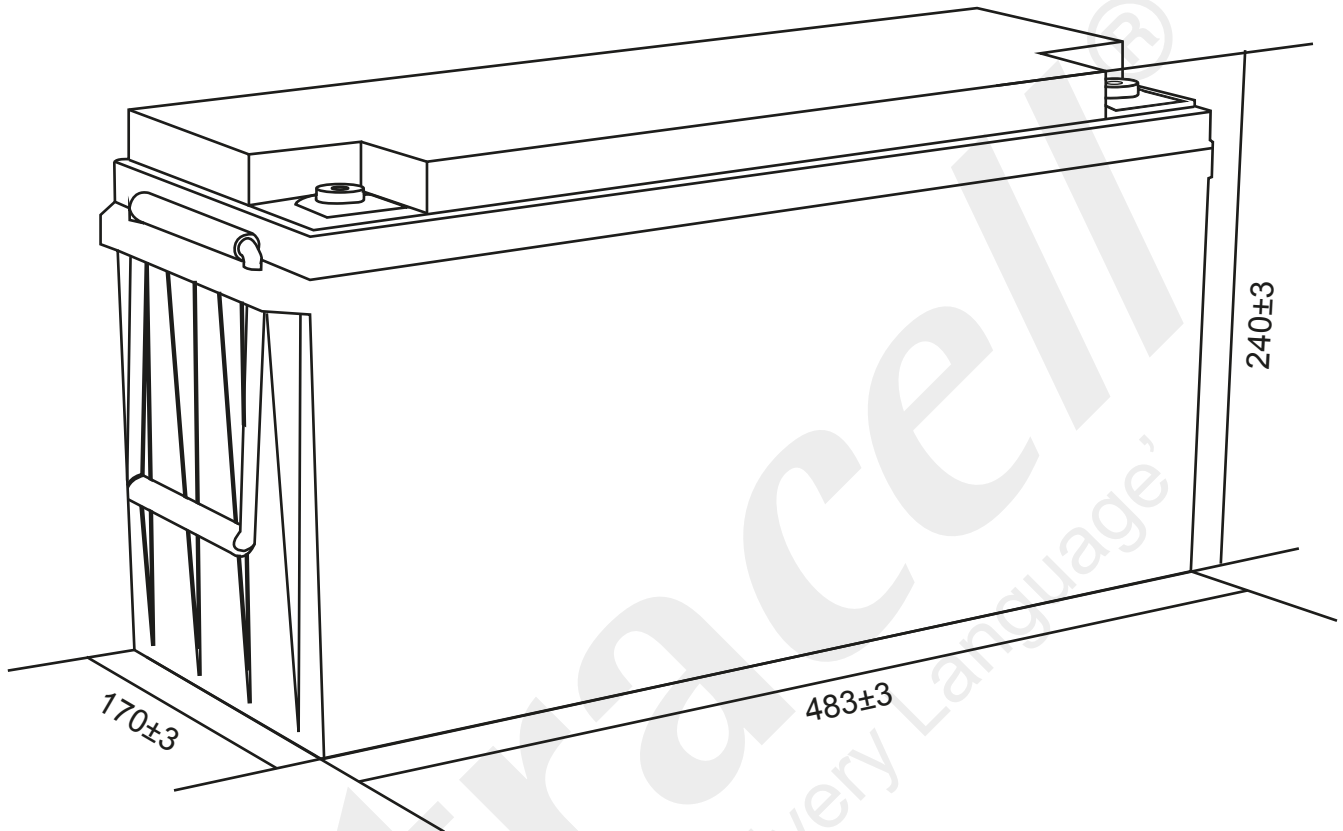
# Ultracell®

'Quality in Every Language'

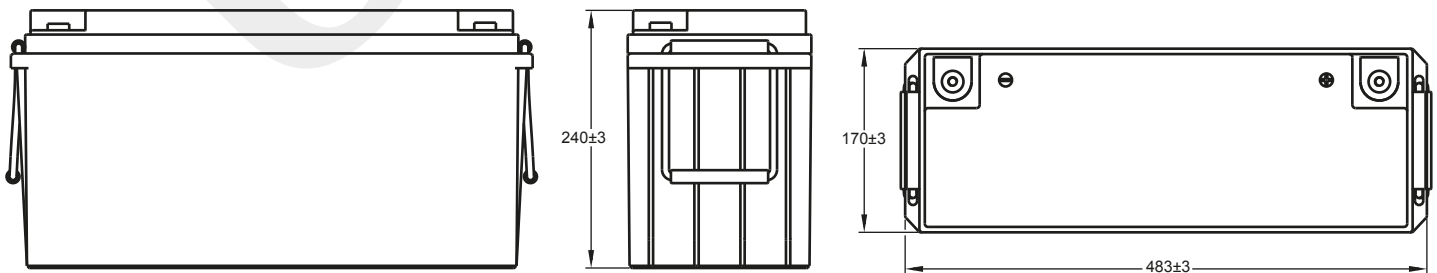
LIT200-12

12.8V 200Ah

Lithium Series



## Technical Dimensions (mm)

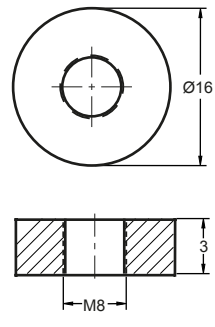


Image



Terminal Dimensions (mm)

Standard Terminal: F11



Technical Specification

<b>Output</b>	Nominal Voltage	12.8V
	Nominal Capacity	200.0Ah
	Minimum Capacity	192.0Ah
	Energy	2560Wh
<b>Terminal Type</b>	Standard Terminal	F11
<b>Container Material</b>	Standard Option	ABS
	Flame Retardant Option (FR)	ABS (UL94:VO)
<b>Standard Charge</b>	Charge Voltage	14.6V
	Standard Charge	0.2C (CC) charge to 3.65V/cell, then (CV) charge to 3.65V/cell, charge for 3.5h
	Rapid Charge	1C (CC) charge to 3.65V/cell, then (CV) charge to 3.65V/cell, charge for 3h
	Max. Charge Current	0.5C (A)
<b>Standard Discharge</b>	Pulse Discharge Current	200A / 3s
	Continuous Discharge Current	0.5CA
	Discharge Cut-off Voltage	8.4V
<b>Operating Temp Range</b>	Discharge Temperature	-20 ~ 60°C
	Charge Temperature	0 ~ 45°C
	Storage Temperature	-20 ~ 45°C
<b>Battery Management System</b>	Complete with BMS unit measuring current, voltage, single cell surface temperature and the ambient temperature of the battery.	

Self Discharge

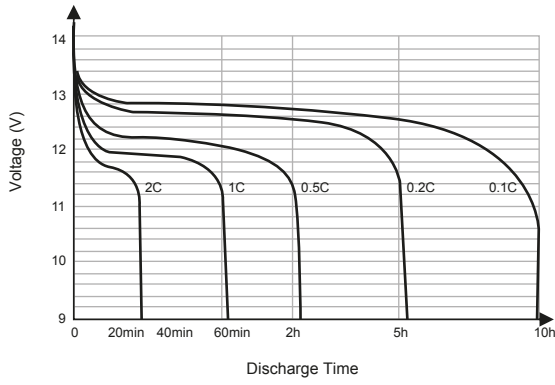
Ultracell® LIT batteries may be stored for up to 2 years at 25°C and then a refresh charge is required. For higher temperatures the time intervals will be shorter.

Transportation

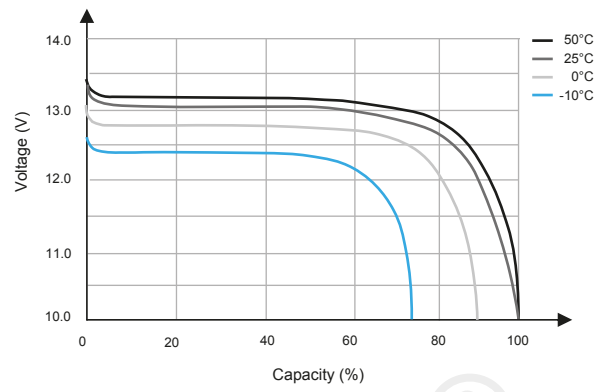
Ultracell® LIT Batteries will be at 30% State of Charge when shipped in accordance to the applicable international and national government regulations. To prevent damage during transit, ensure packaging is safe and secure. Keep battery dry and away from direct sunlight. Suitable for all transportation vehicles.



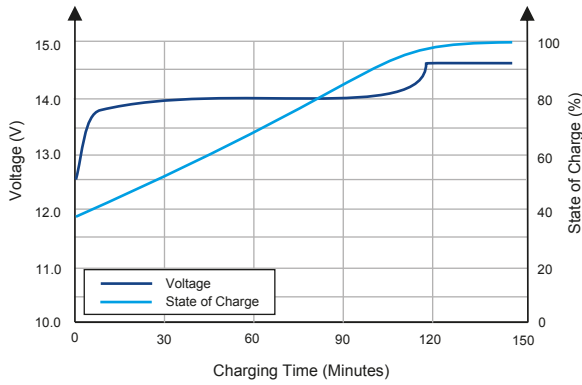
Different Rate Discharge Curve (25°C)



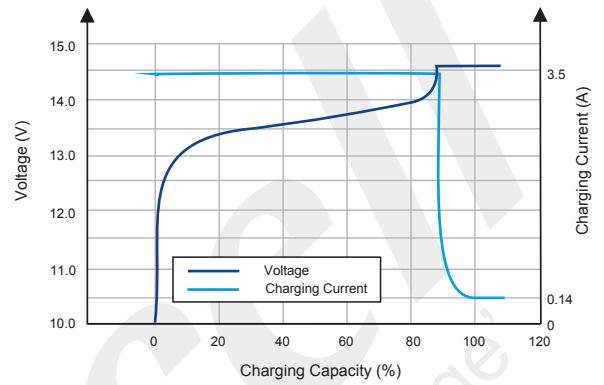
Different Temperature Discharge Curve (0.5C)



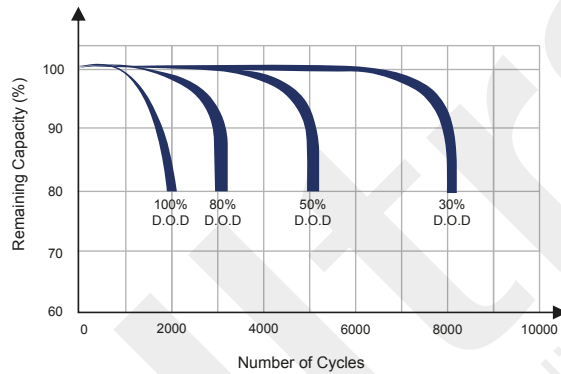
State of Charge Curve (0.5C, 25°C)



Charging Characteristics (0.5C, 25°C)



Cycle Life on D.O.D (25°C)



Temperature on Self Discharge Curve

