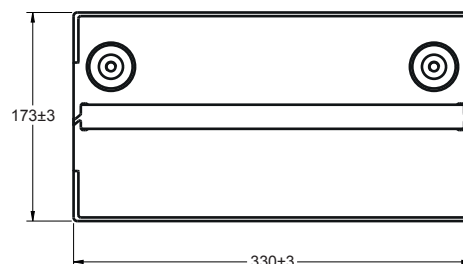
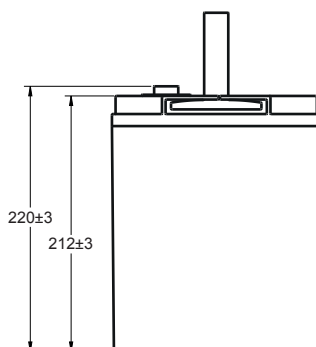
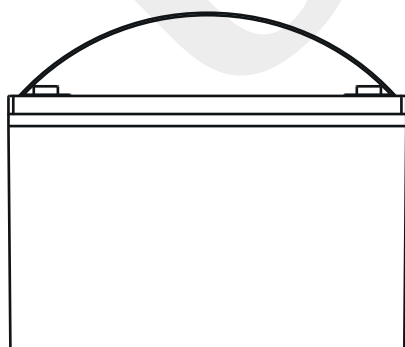


### Technical Dimensions (mm)

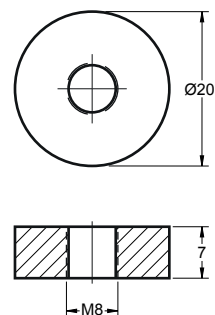


Image



Terminal Dimensions (mm)

Standard Terminal: F11



Technical Specification

<b>Output</b>	Nominal Voltage	12V
	Nominal Capacity (3HR)	100Ah
<b>Terminal Type</b>	Standard Terminal	F11
<b>Container Material</b>	Standard Option	ABS
	Flame Retardant Option (FR)	ABS (UL94:VO)
<b>Rated Capacity</b>	(20HR, 25°C)	120.0 Ah
	(10HR, 25°C)	114.0 Ah
	(3HR, 25°C)	100.0 Ah
<b>Discharge Characteristics</b>	Operating Temperature Range	Discharge: -15°C ~ 50°C
		Charge: 0°C ~ 40°C
		Storage: -15°C ~ 40°C

EV100-12  
12V 100Ah  
Electric Vehicle Series

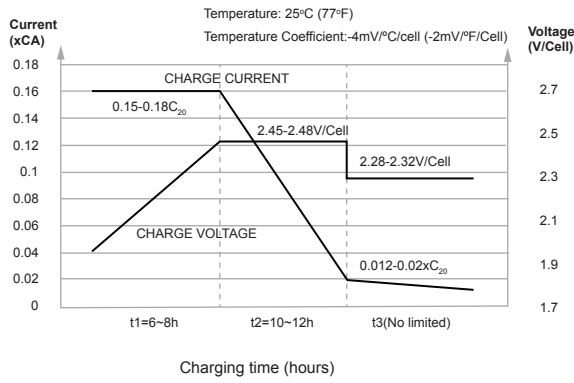


Self Discharge

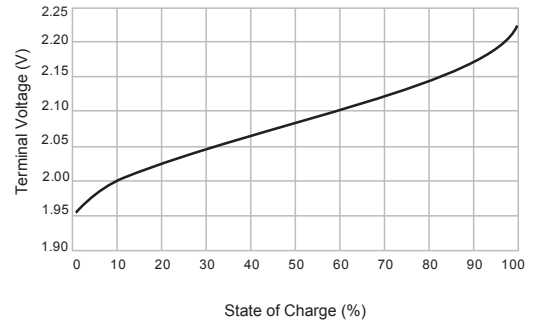
Ultracell® EV batteries may be stored for up to 6 months at 25°C and then a refresh charge is required. For higher temperatures the time intervals will be shorter.



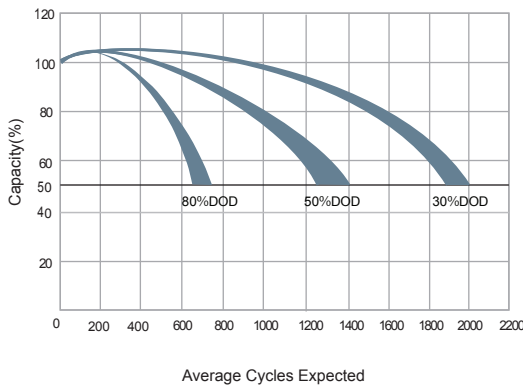
### Charging Characteristics



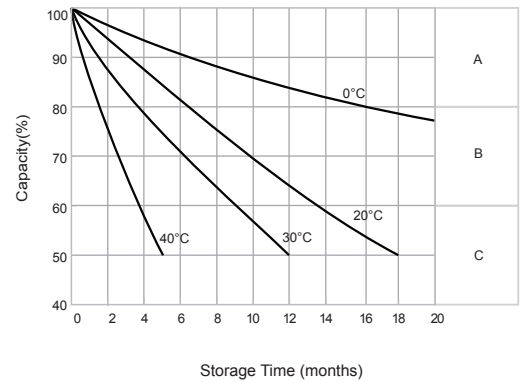
### Relationship of OCV & State of Charge



### Cycle Life vs Depth of Discharge



### General Relation of Capacity vs Storage Time



### General Relation of Capacity vs. Storage Time (Notes)

- A) No supplementary charge required.  
(Carryout supplementary charge before use if 100% capacity is required.)
- B) Supplementary charge required before use to recover full capacity.
- C) Supplementary charge may often fail to recover the capacity.  
The battery should never be left standing till this is reached.